

BD 9/7 M4 0,35kW

GENERAL DATA



FAN DOUBLE INLET

MANUFACTURING FEATURES:

- Galvanised steel sheet housing.
- Double inlet forward curved impeller in all models. Turbine fiber reinforced glass sizes 7-7, 9-9, 10/10 and 12/12. Other models in galvanized sheet.
- Supplied with mounting feet (included in price).
- Exclusive system Casals fixing motor and turbine fan by flexible arms silent blocks to avoid any vibration. Arms in compliance with ROHS regulations 2002/95 / EC (Restriction of Hazardous Substances in electrical and electronic equipment)
- Closed motors specially designed Casals: extruded aluminum housing, all protected inside the terminal box, built-in motor with IP65 connections.
- Motor with IP55 protection and Class F insulation standard voltages: 230V 50Hz in single phase and 230/400V 50Hz three-phase.
- Single phase voltage controllable. Adjustable phase models suitable for inverter.

APPLICATIONS:

Designed for assembly in equipment:

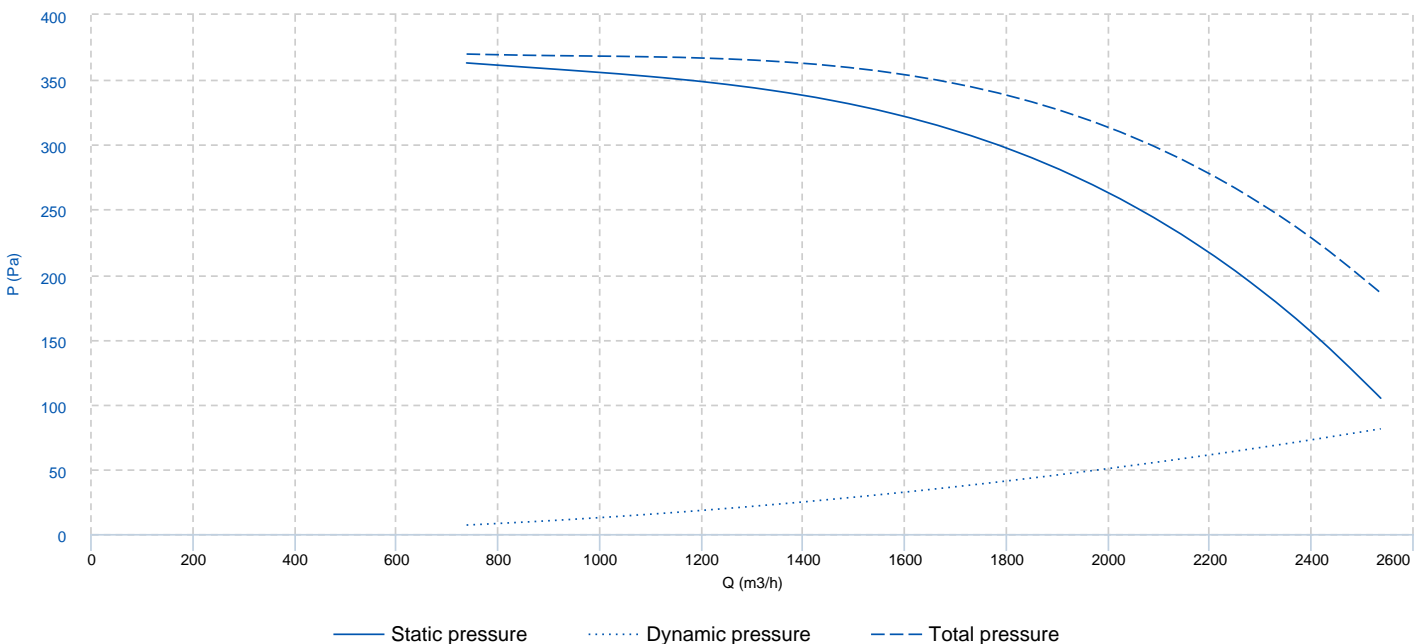
- Ventilation boxes and air handling units.
- Centrifugal heaters.
- Industrial and professional kitchen hoods.
- Maximum working temperature: 50°C.

UNDER REQUEST

- Impeller made of galvanized steel sheet.
- assembled

* While stocks last.

PERFORMANCE CURVE



TECHNICAL DATA

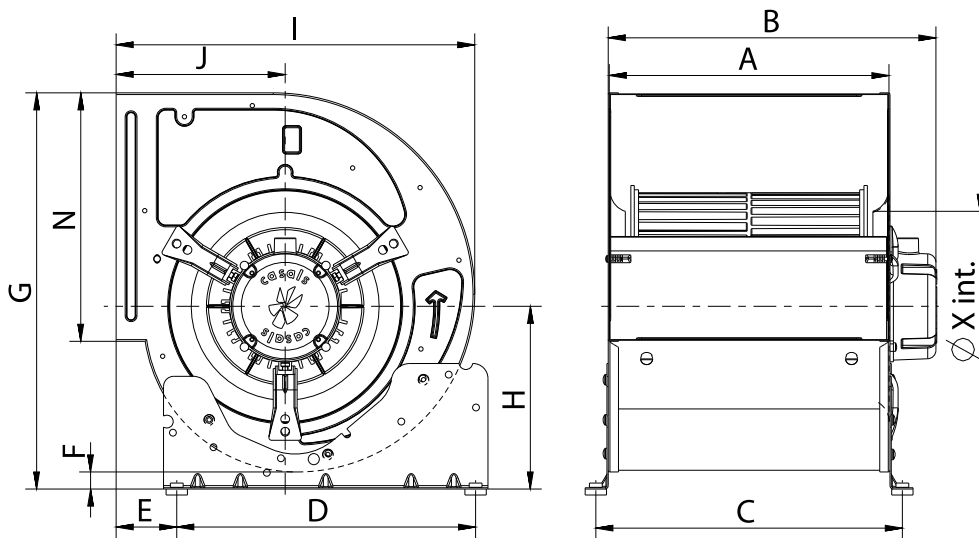
Fan

RPM	1375	Approx. weight	15 kg	Max. Flow	2540 m3/h
-----	------	----------------	-------	-----------	-----------

Motor

Power	0.35 kW	reports.motor_rpm	1375	Capacitor	18µF 400V
I max. (230V)	2,7 A	Size	80	Approx. weight	6.4 kg
FP	0,98				

DIMENSIONS

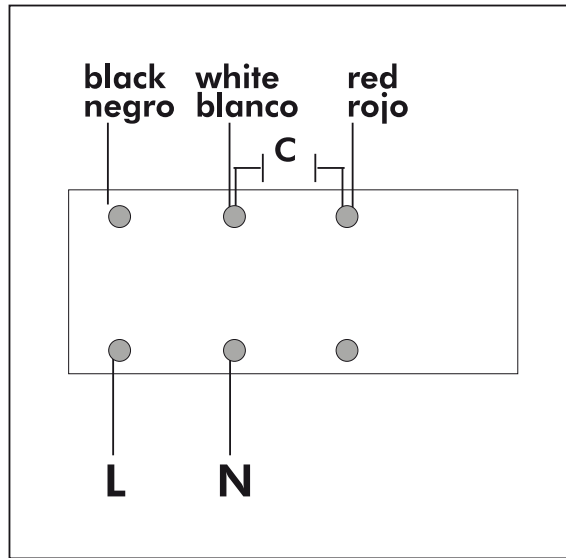


Dimensions (mm)

A	233	B max	287	C	262	D	245	E	70
F	19	G	407	H	191	I	376	J	184
N	260	X	202						

WIRING DIAGRAM

SINGLE PHASE MOTOR MOTOR MONOFÁSICO

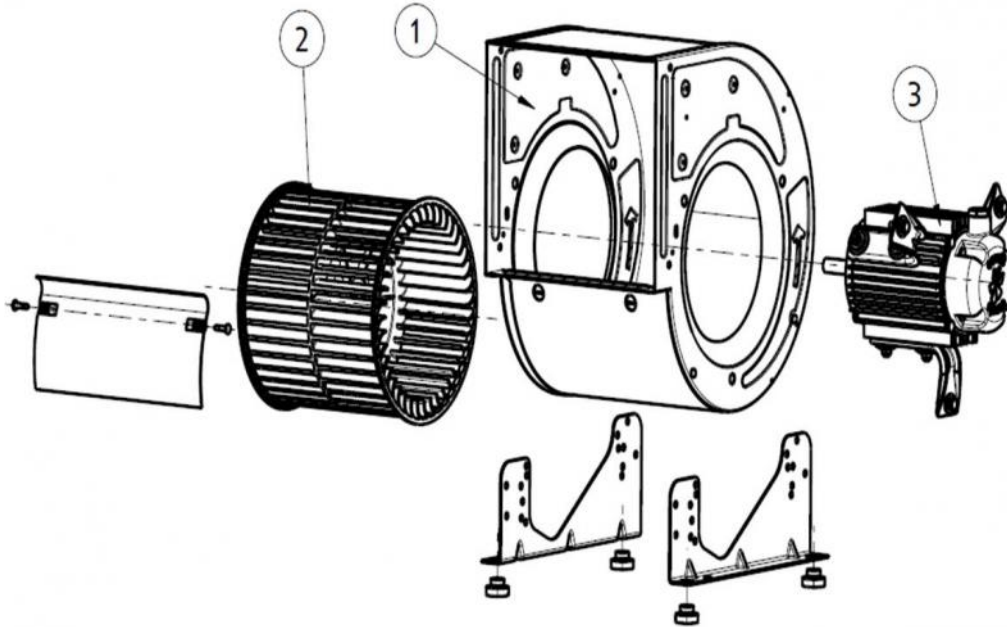


ACCESSORIES



SINGLE PHASE MANUAL SPEED CONTROLLER
REG 3A
REF: 960710030

SPARE PARTS



	Code	Family	Model	RPM	Grades
1	251269421	1 x CASING	BD9/7	-	-
2	251269381	1 x TURBINE	BD 9/7	-	-
3	251279478	1 x MOTOR+SUPPORTS	BD9/7M4	-	-
3	720331132	1 x MOTOR	BD M4 0,35kW	-	-